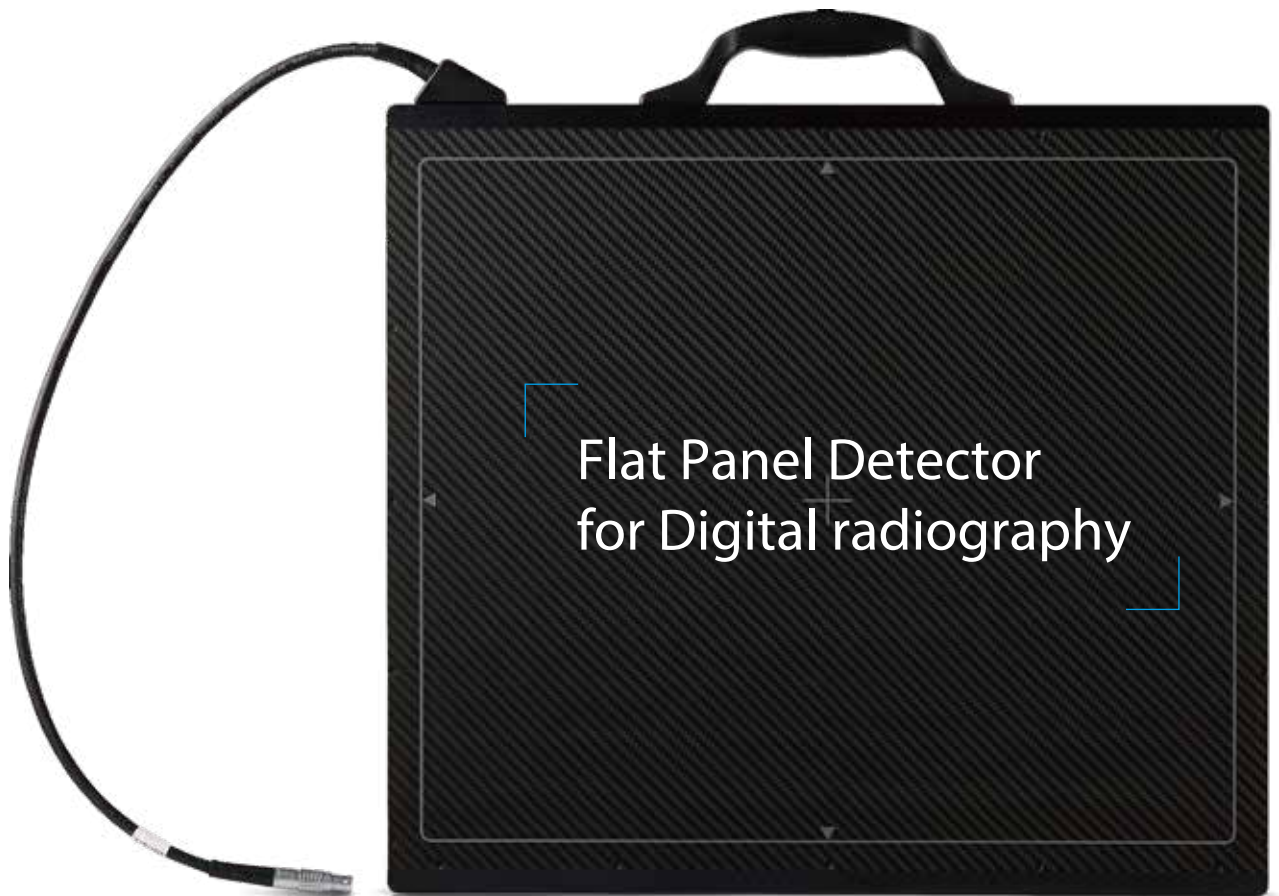


1417PCA/PGA

rayence

# Portable, Wired



Flat Panel Detector  
for Digital radiography

Economical choice  
for superior image quality

- Compatible with X-ray cassette tray (15mm thickness)
- High Resolutions : 127  $\mu$ m
- Dependable connection with mold type cable
- Auto-triggering technology
- Install in less 1 hour
- Ideal for in-room and mobile imaging

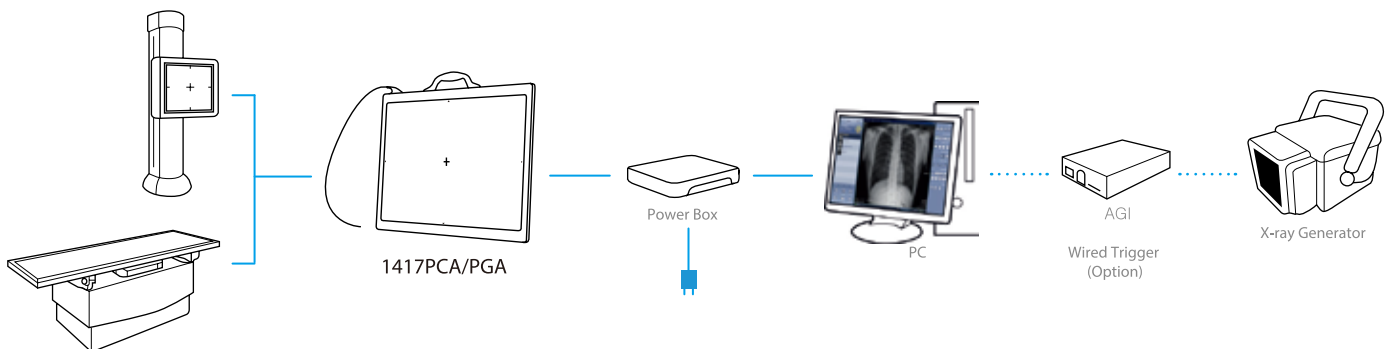
# 1417PCA/PGA

Portable, Wired Flat Panel Detector

## Flexibility, Portability, and Versatility

The 1417PCA/PGA provides the ultimate in adaptability to its environments. Whether it is being used on tabletop, in universal stands, tables, or upright buckys, the 1417PCA/PGA can easily be retrofitted into a wide range of general radiography systems. It uses auto-trigger signal sensing technology that does not require any integration into an x-ray generator. This advanced auto-triggering technology makes ideal solution for both fixed and mobile or portable x-ray applications.

## Configuration



## Specification

Sensor Type	Amorphous Silicon with TFT
Scintillator	CsI : TI (PCA) / Gd <sub>2</sub> O <sub>2</sub> S:Tb (PGA)
Active Area	358(H) x 423(V) mm (14" x 17")
Active Pixels	2,816(H) x 3,328(V) px
Pixel Pitch	127 µm
Limiting Resolution	3.9 lp/mm
A/D conversion	14 / 16 bits
Preview Time	≤2 Sec
Interface	Gigabit Ethernet
Energy Range	40 ~ 150 kVp
Dimension (W x L X H)	417 x 460 x 15 mm
Weight	3.5 kg (7.5 lbs) (Approx.)
Weight Limit	Surface Pressure : 150kg Center Pressure : 100kg @ 40mm diameter
Operating Environment	5~40°C, 30~75 % RH operating (non-condensing)



\* Specifications are subject to change without prior notification

\* Designed and manufactured by Rayence in Korea

## Contact Info

**Rayence Co., Ltd**

14, Samsung 1-ro, 1-gil, Hwaseong-si, Gyeonggi-do, Korea

Office (82)31-8015-6245 Fax (82)31-8015-6300

E-mail [marketing@rayence.com](mailto:marketing@rayence.com)

[www.rayence.com](http://www.rayence.com)

**rayence**